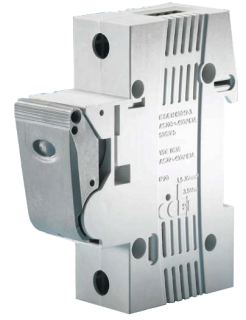


IEC Low Voltage General Purpose Protection

Fusegear for D0 General purpose fuses
D02, 63A, 230/400VAC (250/440VAC)



**Complying with DIN VDE 0660 Part 107
EN / IEC 60947-3
DIN VDE 0636 Part 3
IEC 60269-3 DIN VDE 0638
DIN VDE 43880**



The D0-LINOCUR is a combination of switch-disconnector-fuse and NEOZED 63 A fuse-link, equipped with significant safety characteristics and sophisticated switching and terminal technology.



The safest operating principles:

- Separate arrangement of switch and fuse
- Optimum switch response and contact making
- Spring-mounted switch mechanism
- Rated breaking capability 50 kA
- Hand-independent closing
- Contacting of fuse-link with screw cap
- Minimum transition resistances due to maximized contact pressure
- Bayonet-type screw cap with defined, clearly visible start and end position

Switch mechanism:

Spring-mounted switching response on activation
Low transition resistances and long service life due to contacts which share functions at the level of the switch contacts (Arcing contacts made of arcing and fusion-resistant material to eliminate arcing) and main contacts (low-resistance, conductive contacts)

The Linocur offers outstanding safety and ease of use:

The power dissipation of the NEOZED fuse-links leads to internal heating in the LINOCUR device. To prevent the device from overheating and avoid the unwanted, premature operation of the fuse-link it is necessary to implement special design measures in this type of compact device.

Heating is reduced thanks to:

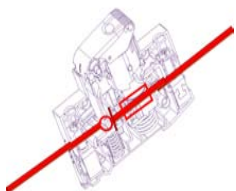
- Generously sized, solid copper strip conductors
- Highly sprung foot contact
- Wide area of heat transfer through contact with the screw cap
- Wide area of contact at the foot contact
- Special contacts which share functions

Special high temperature-resistant materials guarantee safe operation even in the case of high thermal stresses due to overloads and short-circuits, high ambient temperatures or the mounting of multiple devices next to one another.

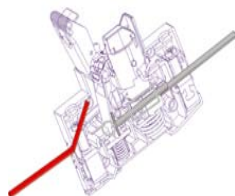
Plastic material:

Housing with excellent thermal properties
Halogen-free, UL listed, RoHS

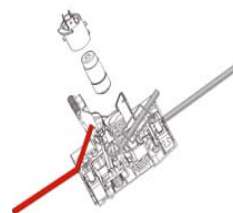
Principle of switching operation:



Switching status "ON":
NEOZED fuse-link with firm contact, switch closed



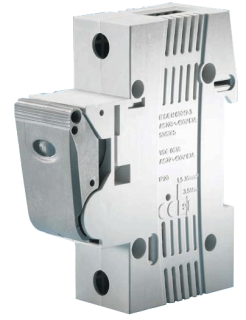
Switching status "OFF":
Switch open, fuse-link disconnected from lower terminal



Switching status "OFF and fuse link removed":
No voltage inside the unit since the fuse-link is disconnected from the lower terminal by the switch. The contact for the bayonet screw cap cannot be touched.

IEC Low Voltage General Purpose Protection

Fusegear for D0 General purpose fuses
D02, 63A, 230/400VAC (250/440VAC)



Technical data

Number of poles: 1, 2, 3-pole
2-pole (1 +N), 4-pole (3+N)

Rated Current (A): 2-63A

Rated Voltage (V): 1-pole: 230VAC
2, 3, 4-pole: 400VAC
Shipbuilding: 440VAC
Per pole: 65VDC

Nominal frequency: 50-60Hz

Rated short-circuit switching capacity: 50kA

Utilization category: AC 22 B
DC 22 B/ 65VDC/pole
AC 23 B/ 400VAC 50A
AC 23 B/ 440VAC 35A

Cross-sections: Double terminal 35mm² both sides
Touchproof covering in accordance with BGV A2
M5 Pozidrive screws
Torque 3.5Nm

Overvoltage category: IV

Rated impulse withstand voltage: 6kV

Impulse withstand voltage over open contacts: 9.6kV

Non-interchangeability: Uses standard gauge-pieces as per VDE 0636-3

Infeed: As required, from above or below, total touchproofing guaranteed, even during the replacement of fuse-links

Protection: IP20 (with connected conductors)*

Fixing type: Snap-on fixing to rail in accordance with DIN EN 60715, using adapter on bus bar system

Materials: Shockproof insulating material
Insulating material RAL 7035 self-extinguishing, halogen-free

Contact protection: In accordance with DIN VDE 0106 Part 100, BGV A2

Operating classes: gL-gG, aM, gR only with limitations
* terminals IP20 with enclosure



D0-LINOCUR switch-disconnector-fuse as per DIN VDE 0638 and 0660 Part 107 gL-gG, aM, gR (only with limitations) D02 230/400VAC, 65VDC.

Can be sealed, for mounting on rails as per DIN EN 60715, fuse-links and gauge pieces not supplied

Size	No of Poles	Nominal Current (A)	Subdivisions	Max. wiring cross-section (mm ²)	Catalog Number	Reference Number	Item group	Weight (g)	Pack.
D02	1	63	1.5	35	05861.063000	Z1012620	78	138	3
D02	2	63	3	35	05862.063000	J1012606	78	279	2
D02	3	63	4.5	35	05863.063000	B1012622	78	418	1
D02*)	1+N	63	3	35	05861.063100	H1012628	78	253	2
D02*)	3+N	63	6	35	05863.063100	E1012602	78	531	1

*) in the 1+N and 3+N variants, the N conductor is leading on switch-on and lagging on switch-off



D0-LINOCUR switch-disconnector-fuse as per DIN VDE 0638 and 0660 Part 107 gL-gG, aM, gR (only with limitations) D02 220VDC.

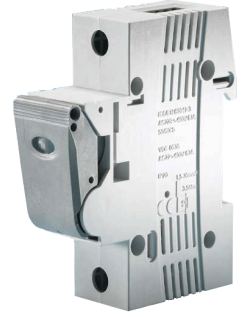
Can be sealed, for mounting on rails as per DIN EN 60715, fuse-links and gauge pieces not supplied

Size	No of Poles	Nominal Current (A)	Max wiring cross-section (mm ²)	Catalog Number	Reference Number	Item group	Weight (g)	Pack.
D02	4	63	35	05864.063000	L1012608	78	554	1

The four poles must be connected in series, either two poles in the positive connection and two poles in the negative connection or all four poles in either the positive or negative connection.

IEC Low Voltage General Purpose Protection

Fusegear for D0 General purpose fuses
D02, 63A, 230/400VAC (250/440VAC)



D0-LINOCUR switch-disconnector-fuse as per DIN VDE 0638 and 0660 Part 107 gL-gG, aM, gR (only with limitations) D02 230/400VAC, 65VDC.

Can be sealed, with fixed gauge pieces, with fuse-links, for mounting on rails in accordance with DIN EN 60715

Size	No of Poles	Nominal Current (A)	Subdivisions	Max wiring cross-section (mm ²)	Catalog Number	Reference Number	Item group	Weight (g)	Pack.
D02	1	20	1.5	35	05861.020000	M1012609	78	150	3
D02	1	25	1.5	35	05861.025000	A1012621	78	151	3
D02	2	25	3	35	05862.025000	B1012760	78	305	2
D02	3	25	4.5	35	05863.025000	G1012627	78	457	2
D02	1	35	1.5	35	05861.035000	N1012610	78	151	3
D02	2	35	3	35	05862.035000	D1012624	78	305	2
D02	3	35	4.5	35	05863.035000	E1012625	78	475	1
D02	1	50	1.5	35	05861.050000	C1012761	78	153	3
D02	2	50	3	35	05862.050000	D1012762	78	308	2
D02	3	50	4.5	35	05863.050000	P1012611	78	462	1



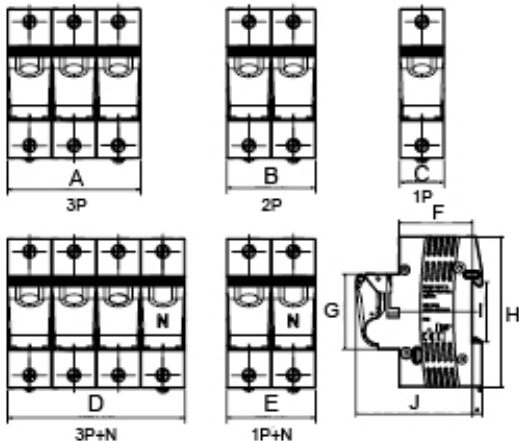
D0-LINOCUR switch-disconnector-fuse as per DIN VDE 0638 and 0660 Part 107 gL-gG, aM, gR (only with limitations) D02 250/440VAC.

For shipbuilding, can be sealed, for mounting on rails as per DIN EN 60715, fuse-links and gauge pieces not supplied

Size	No of Poles	Nominal Current (A)	Subdivisions	Max wiring cross-section (mm ²)	Catalog Number	Reference Number	Item group	Weight (g)	Pack.
D02	1	63	1.5	35	05861.063040	H1012605	78	138	3
D02	2	63	3	35	05862.063040	S1012614	78	279	2
D02	3	63	4.5	35	05863.063040	J1012629	78	418	1
D02*)	3+N	63	6	35	05863.063140	T1012615	78	253	1

*) in the 3+N variant, the N conductor is leading on switch-on and lagging on switch-off

Dimensions

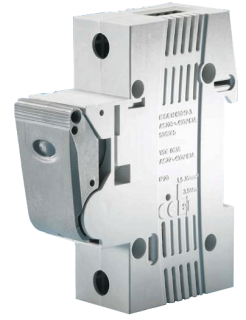


A	B	C	D	E	F	G	H	J
79.8 ± 0.9	53.2 ± 0.6	26.6 ± 0.3	106.4 ± 1.2	53.2 ± 0.6	44 max.	45 ± 0.5	90 max.	70 max.*

* 91.5 max. switch off

IEC Low Voltage General Purpose Protection

Fusegear for D0 General purpose fuses
D02, 63A, 230/400VAC (250/440VAC)



Connecting terminals

Different conductor cross-sections and types can be connected without difficulty on both the input and output sides

Divided connecting terminal for connecting two wires

1. flexible wiring with conductor end sleeves

two wires of same cross-section: up to max. 16 mm²

two different wires: 25 mm² and max. 6 mm²

35 mm² and max. 4 mm²

with paired conductor end sleeves: up to max. 16 mm²

2. flexible, thin-wire wires without conductor end sleeves

two wires of same cross-section: up to max. 16 mm²

two different wires: 25 mm² and max. 16 mm²

35 mm² and max. 10 mm²

3. short-circuit resistant wires

two wires of same cross-section: up to max. 6 mm²

Maximum connection cross-section of input and output terminal: 35 mm²



Linocur for DC Voltages

The 1, 2 and 3-pole devices are labelled 400VAC. However, in usage category DC 22 B, these can be used at up to 65VDC per pole, i.e. 2-pole devices up to 130VDC.

The 4-pole LINOCUR can be used up to 220VDC (DC 22 B) and is therefore labelled 220VDC. This device is not permitted for applications in AC voltage systems.

All the poles must be connected in series. In this case, it doesn't matter whether the LINOCUR poles are installed in the positive wire, negative wire or are distributed across the two. The 1+N and 3+N variants are not suitable for DC voltage application (N pole both leading and lagging).

Related products

Replacement screw cap for D0-LINOCUR. Insulating material, bayonet variant (only suitable for the D0-Linocur) with sealing hole, without test hole

The new Linocur is the first to possess a bayonet-type screw cap. This new screw cap has enormous advantages compared to conventional caps with Edison thread:

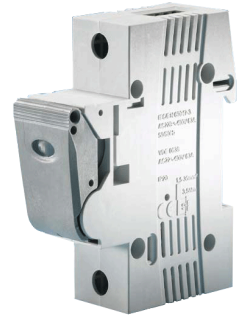
- Only a 90° rotation required to screw in or out
- The screw cap has a defined start and end position
- No need to "search" for the start of the thread
- Correct end position of screw cap is clearly visible
- Considerable time savings when inserting or replacing fuse-links



Size	Nominal Current (A)	Catalog Number	Reference Number	Item group	Weight (g)	Pack.
D02	63	01715.700000	K1015206	78	12	10

IEC Low Voltage General Purpose Protection

Fusegear for D0 General purpose fuses
D02, 63A, 230/400VAC (250/440VAC)



Screw cap insertion tool for D0-LINOCUR. Suitable for the bayonet-type screw cap of the D0-Linocur and the E18 screw cap of the previous Linocur generation.

Size	Variant	Catalog Number	Reference Number	Item group	Weight (g)	Pack.
D02	without bottle opener	01716.000000	X222936	78	20	1
D02	with bottle opener	01716.333000	F200726	78	30	1

The Linocur can be locked using special insulating screw caps. A conventional industrial locking wrench should be used to handle the locking caps.



Locking cap for D0-Linocur. Insulating material, bayonet variant (only suitable for the D0-Linocur) for locking the D0-Linocur (with industrial locking wrench)

Size	Variant	Nominal Current (A)	Catalog Number	Reference Number	Item group	Weight (g)	Pack.
D02	Industrial	63	01715.710000	L1015207	78	6.5	10

Locking wrench. Suitable for the D0-Linocur's bayonet- type locking cap and for other industrial D and D0 locking caps.

Size	Variant	Catalog Number	Reference Number	Item group	Weight (g)	Pack.
D0	Industrial	01714.830000	J214069	47	40	50

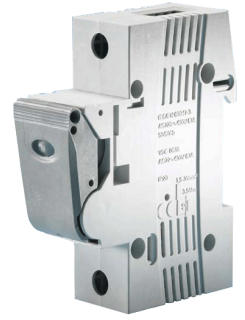


Reduction spring. For the use of D01 fuse-links in the bajonet screw-cap of the Linocur.

Size	Catalog Number	Reference Number	Item group	Weight (g)	Pack.
D01	01713.700000	W1016665	78	1	10

IEC Low Voltage General Purpose Protection

Fusegear for D0 General purpose fuses
D02, 63A, 230/400VAC (250/440VAC)



Wiring rails Pin-type variant for D0-LINOCUR. The user cuts these wiring rails to the required length. End caps are used to insulate the unprotected ends.

Pin-type wiring rails are suitable for the wiring of D0 Linocur switch-disconnector-fuse. The D0-Linocur can engage with the wiring rail in the lower part of the shared box terminals and connect to the infeed wire in the upper part. This arrangement means that the point of infeed is always visible and wiring can be performed easily and safely.

The maximum current-carrying capacity of the wiring rail is reached when the infeed is supplied in the middle of the wiring rail. Wiring rails can be cut to the required length. The use of end caps guarantees optimum protection against contact and prevents flashover at the ends of the rail. Eurovario rails have all-round insulation. They are supplied in a fixed length and cannot be cut.

Technical data

Single-phase wiring

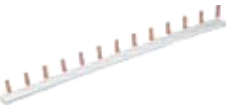
Rail cross-section	10mm ²	16mm ²	35mm ²
Max. current on rail	63A	80A	125A
Max. supply current with central supply	100A	120A	210A

Rated voltage 400V
High voltage strength to 3kV
Short-circuit strength to 25kA

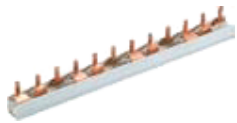
Multiphase wiring

Rail cross-section	10mm ²	16mm ²	36mm ²
Max. current on rail	63A	80A	125A
Max. supply current with central supply	100A	120A	160A

Compliant with VDE 0606/9.77
Rail material Copper SF-Cu
Insulating profile material high temperature-resistant, flameproof self-extinguishing, halogen-free



Division distance (mm)	Cross-section (mm ²)	Length (mm)	1-pole circuits	Suitable end cap	Catalog Number	Reference Number	Item group	Weight (g)	Pack.
27	16	1000	37	A11	02963.000000	M215107	89	192	50



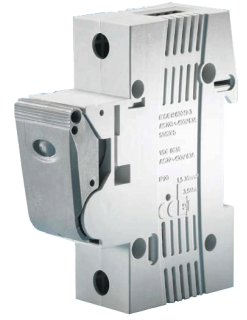
Division distance (mm)	Cross-section (mm ²)	3-pole circuits	Length (mm)	Suitable end cap	Replaces in old system	Catalog Number	Reference Number	Item group	Weight (g)	Pack.
27	16	13	1000	A5	02963.003000	22963.003000	K302873	89	609	20
27	35	13	1000	A26	02963.363000	22963.363000	L302874	89	1241	10

Special wiring bar to connect Linocur (27mm) with miniature circuit breakers (18mm)

Division distance (mm)	Cross-section (mm ²)	Length (mm)	3-pole circuits	Suitable end cap	Catalog Number	Reference Number	Item group	Weight (g)	Pack.
27/17.8	16	140	1+1	already mounted	02923.109156	D302890	89	68.5	10

IEC Low Voltage General Purpose Protection

Fusegear for D0 General purpose fuses
D02, 63A, 230/400VAC (250/440VAC)



End caps for wiring rails. End caps are used to insulate the open ends of wiring rails. They are not needed for Eurovario rails.

Size	Variant	Catalog Number	Reference Number	Item group	Weight (g)	Pack.
End cap A11	for rails, 1-pole	02901.000000	E302891	89	0.1	10
End cap A5	for rails, 3-pole, 10 and 16 mm ² , L-shaped	02903.165000	G302893	89	1	10
End cap A26	for rails, 3-pole, 35 mm ²	02903.350000	R302902	89	1.2	10



Eurovario wiring rails for D0-LINOCUR. Eurovario wiring rails have a fixed length and may not be cut. End caps are therefore not needed.

Division distance (mm)	Cross-section (mm ²)	Lenght (mm)	3-pole circuits	Suitable end cap	Catalog Number	Reference Number	Item group	Weight (g)	Pack.
27	10	159	2	*	02923.102159	Z302886	89	46	10
27	16	159	2	*	02923.162159	A302887	89	68	10
27	10	243	3	*	02923.102243	B302888	89	80	10
27	16	243	3	*	02923.162243	C302889	89	114	10

**Comment: Eurovario wiring rails do not need any end caps*



Connecting terminal 50 mm². If the 35 mm² rail 22963.363000 is used then the infeed terminal is required.

Variant	Cross-section (mm ²)	Catalog Number	Reference Number	Item group	Weight (g)	Pack.
insulated, long	50	02993.100000	V1007924	89	35	10

IEC Low Voltage General Purpose Protection

Fusegear for D0 General purpose fuses
D02, 63A, 230/400VAC (250/440VAC)



Linocur Monitoring Devices

D0-LINOCUR monitoring devices. For all Linocur variants. Depending on the type, closes a galvanically isolated contact to indicate: the switch position, fuse operation, the switch position plus fuse operation



- Type 1: Monitoring device for switch position
- Type 2: Monitoring device for fuse operation
- Type 3: Monitoring device for switch position and fuse operation

The monitoring devices can be used with all Linocur types. The devices are mounted to the right of the Linocur using the supplied clips. They are connected externally in parallel to the Linocur.



The relay output contact closes (depending on type) if

- The Linocur switch is manually switched off (type 1)
- At least one fuse in the device operates (type 2)
- The Linocur switch is manually switched off, or at least one fuse in the device operates (type 3)

The relay output contact is galvanically isolated from the device.

The monitoring devices do not require any power supply. Power is supplied to them by the Linocur (from the lower connecting terminals).

If infeed is supplied to the Linocur from below then the lower Linocur terminals are connected to the lower terminals of the monitoring device and the upper Linocur terminals are connected to the upper monitoring device terminals.

If infeed is supplied to the Linocur from above then the terminal connections are crossed over: the lower Linocur terminals are connected to the upper monitoring device terminals and the upper Linocur terminals are connected to the lower monitoring device terminals.

Technical data

Suitable for the Linocur types: 2-pole, 3-pole, 3+N
Operating Voltage: 400VAC ($\pm 10\%$)
Device width: 27mm (like one Linocur pole)
Protection: IP20
Operating temperature: -20°C to 60°C
Storage temperature: -40°C to 70°C
Connectors for connection to Linocur: 2x3 connections cables with pin terminals
Connectors for connection to relay output: 3 box terminals, 2.5mm^2 - Torque 0.5Nm
Connectors for connection to relay: 1 change-over contact max. 250VAC / 2A, minimum load 10mA at 12V AC15 240VAC / DC13 125VDC

Relay insulation voltage: 5000VAC
Insulation voltage of open relay contact: 1000VAC
Insulation test U_{imp} : 6kV
Impulse test voltage between Phase input and output: 9.6kV
Impulse test voltage between Phase-to-phase: 9.6kV
Impulse test voltage between Power section and output terminals: 7.2kV
Material: Halogen-free, UL listed, RoHS
Materials: contact:
Cadmium-free

IEC Low Voltage General Purpose Protection

Fusegear for D0 General purpose fuses
D02, 63A, 230/400VAC (250/440VAC)



Linocur Monitoring Devices

Variant	Description	Subdivisions	Max wiring cross-section (mm ²)	Catalog Number	Reference Number	Item group	Pack.
Type 1	for switch position	1.5	1.5	05860.100000	G1015203	78	1
Type 2	for fuse operation	1.5	1.5	05860.200000	H1015204	78	1
Type 3	for switch position and fuse operation	1.5	1.5	05860.300000	J1015205	78	1

The monitoring devices have a test button which can be used to simulate faults. The test button must be held down for a minimum of 2 seconds. The relay then switches. This operation is indicated by the red LED. After 3 to 5 seconds, the relay switches back to its basic status and the red LED goes out.

The devices have two LED indicators:

green LED lit:

Normal operating status, supply voltage present, fuses correct, switch lever closed

green and red LEDs flashing:

At least one fuse has operated (for types 2 and 3).

green and red LEDs lit:

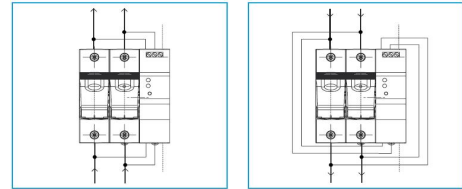
Switch open (for types 1 and 3)

green and red LEDs not lit:

The device has no supply voltage and is not operating.

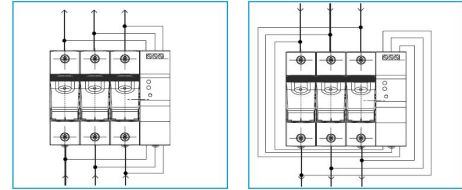
Infeed from below - Infeed from above

2-pole
Linocur



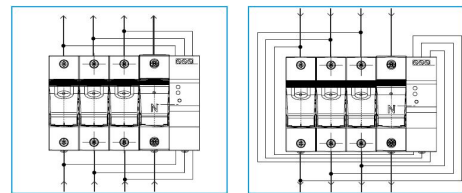
Infeed from below - Infeed from above

3-pole
Linocur



Infeed from below - Infeed from above

3+N pole
Linocur



Timecourse (for types 2 and 3)

